



# Results of the 2018 Session of the European Baccalaureate

EUROPEAN SCHOOL OF BRUSSELS IV (LAEKEN)

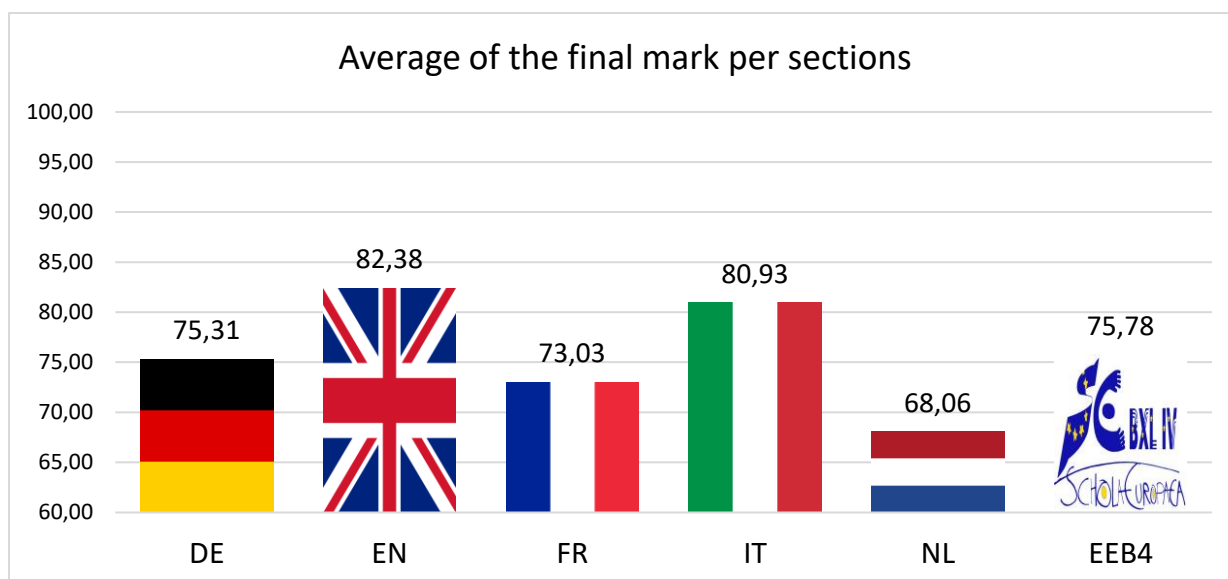


*Adresse :*

École Européenne Bruxelles 4  
Drève Sainte-Anne, 86 — B-1020 Bruxelles

*Contact :*

N°: 02/340.13.91 — Fax: 02/340.14.98  
[www.eeb4.be](http://www.eeb4.be)

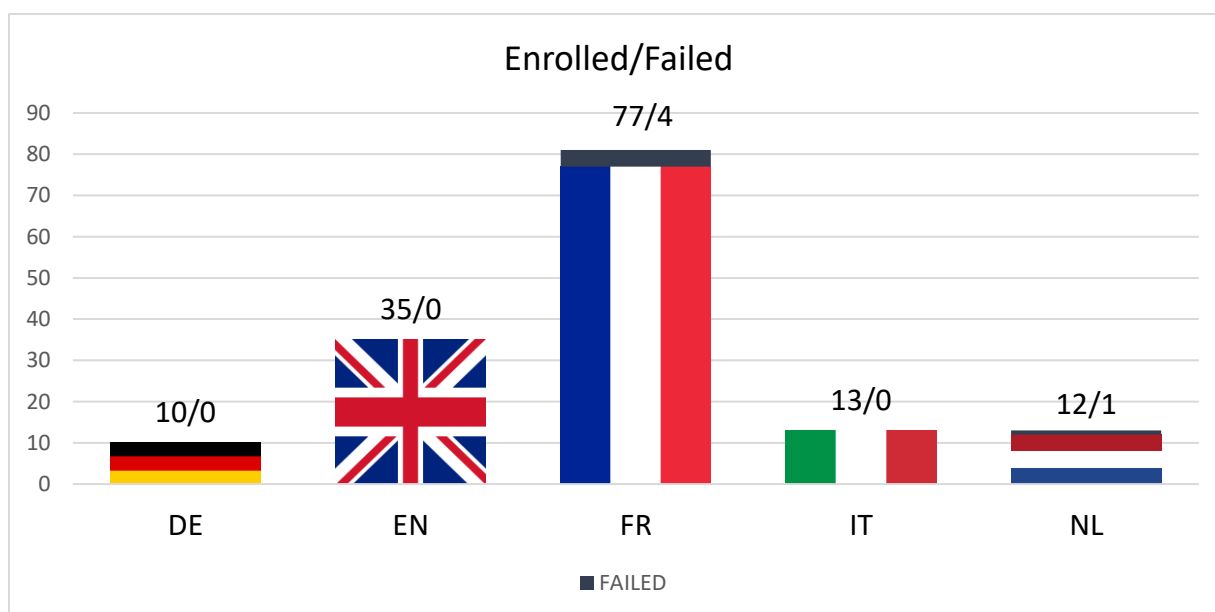


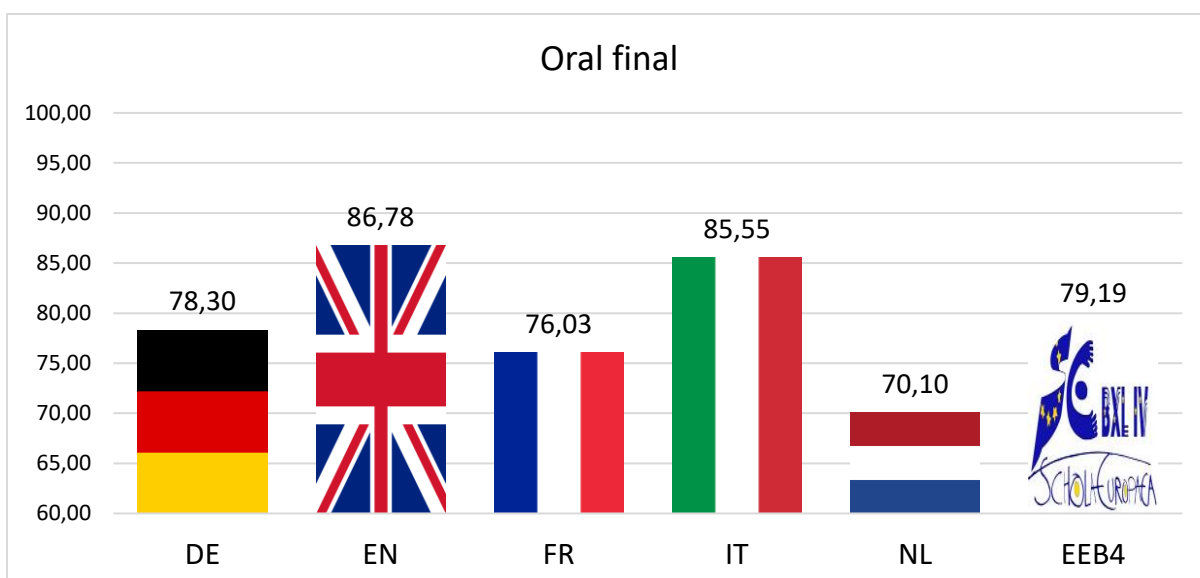
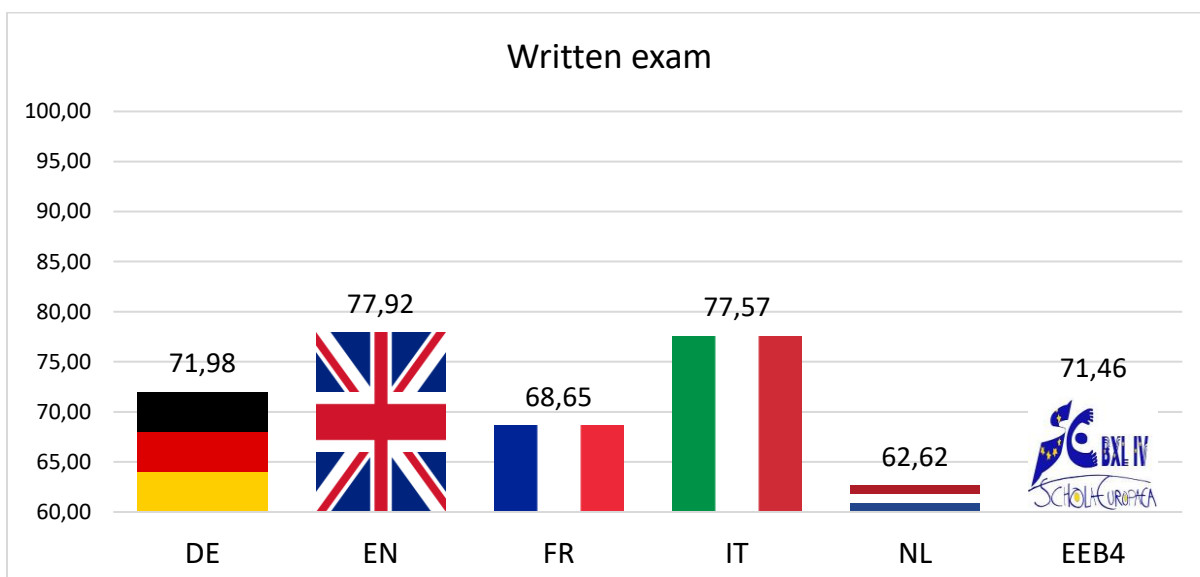
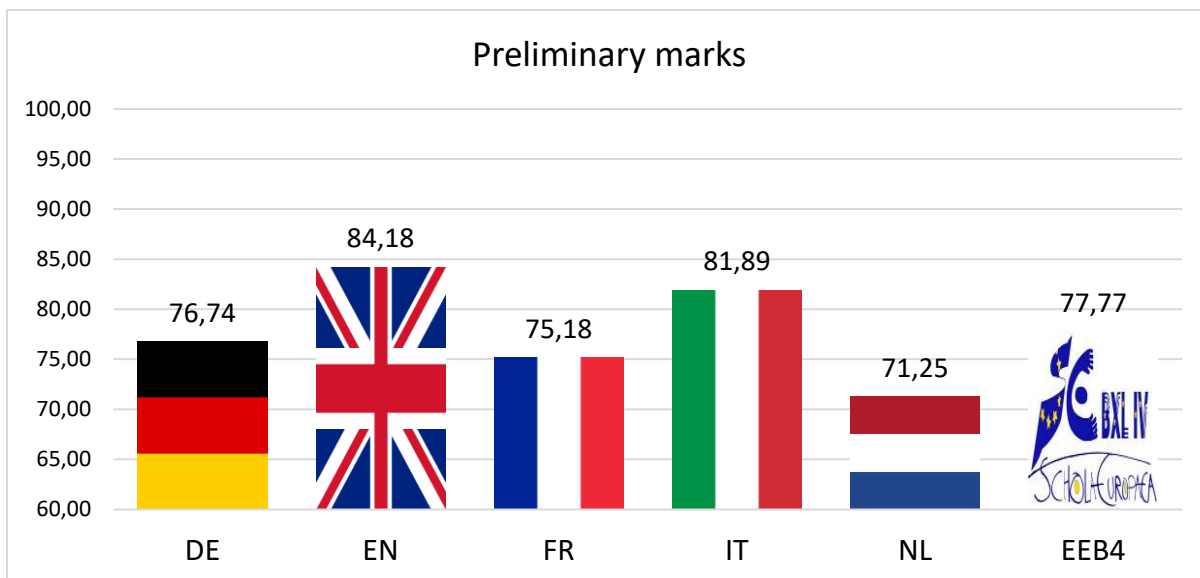
**Highest final grade: 92.79**

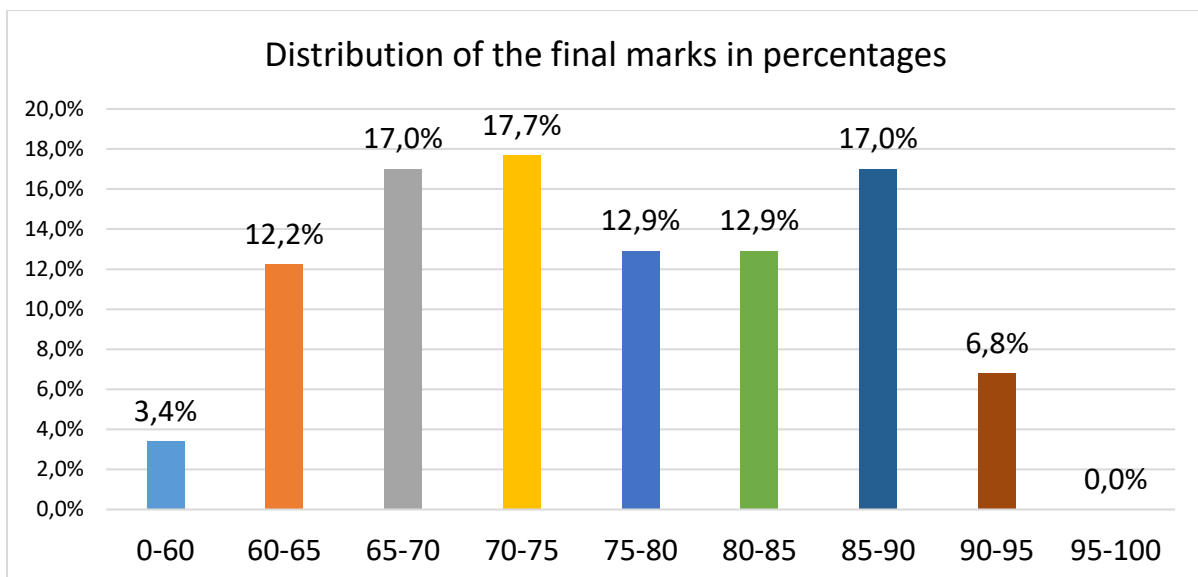
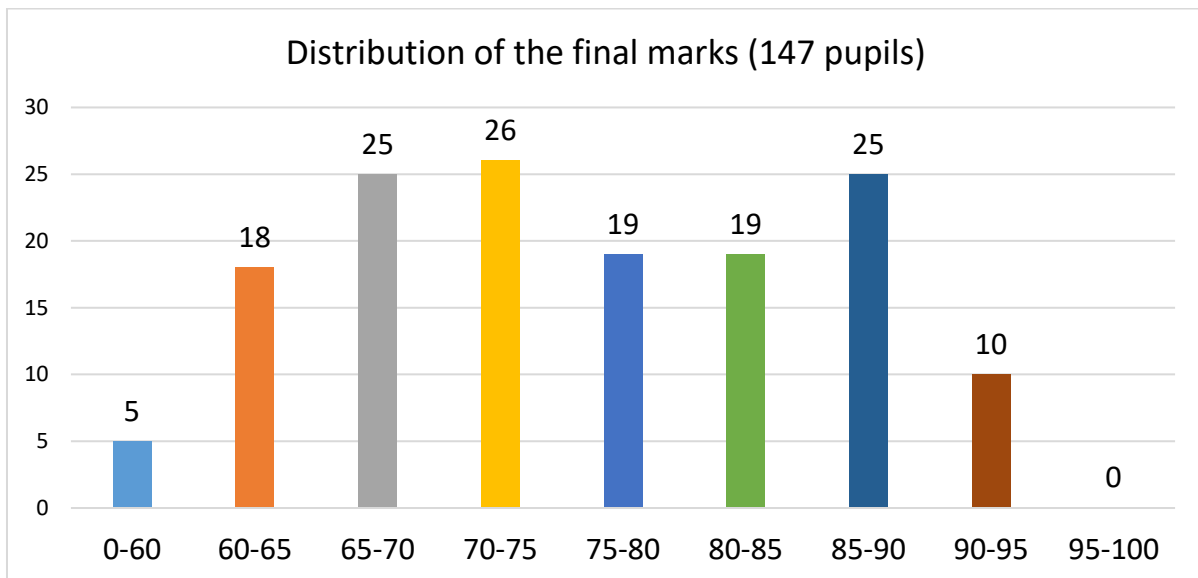
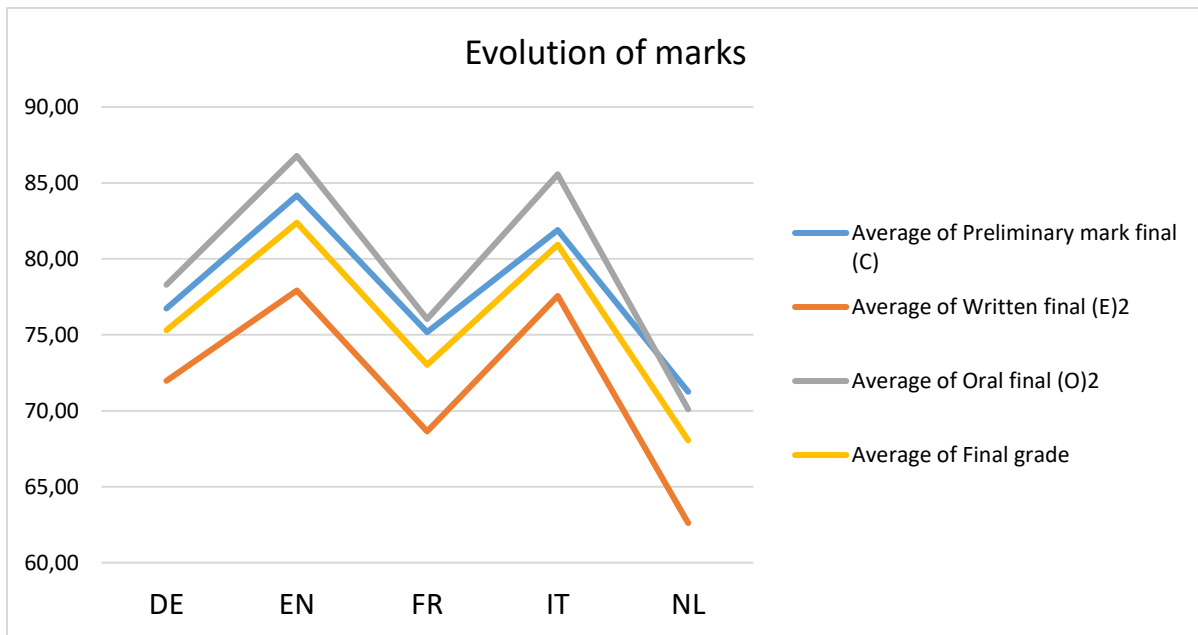
**Lowest final grade: 55.01**

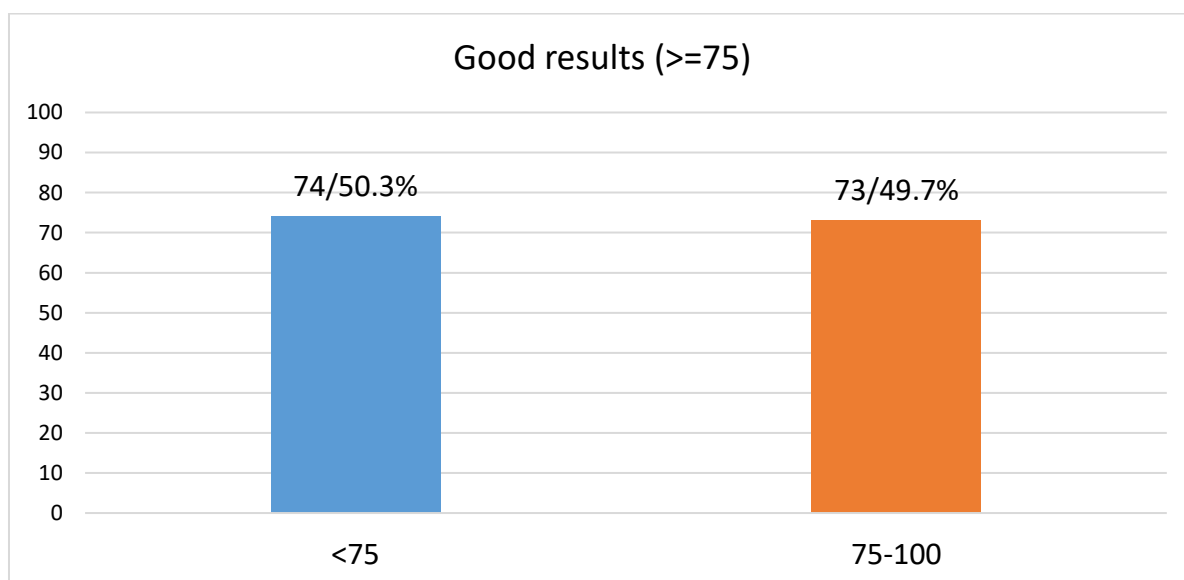
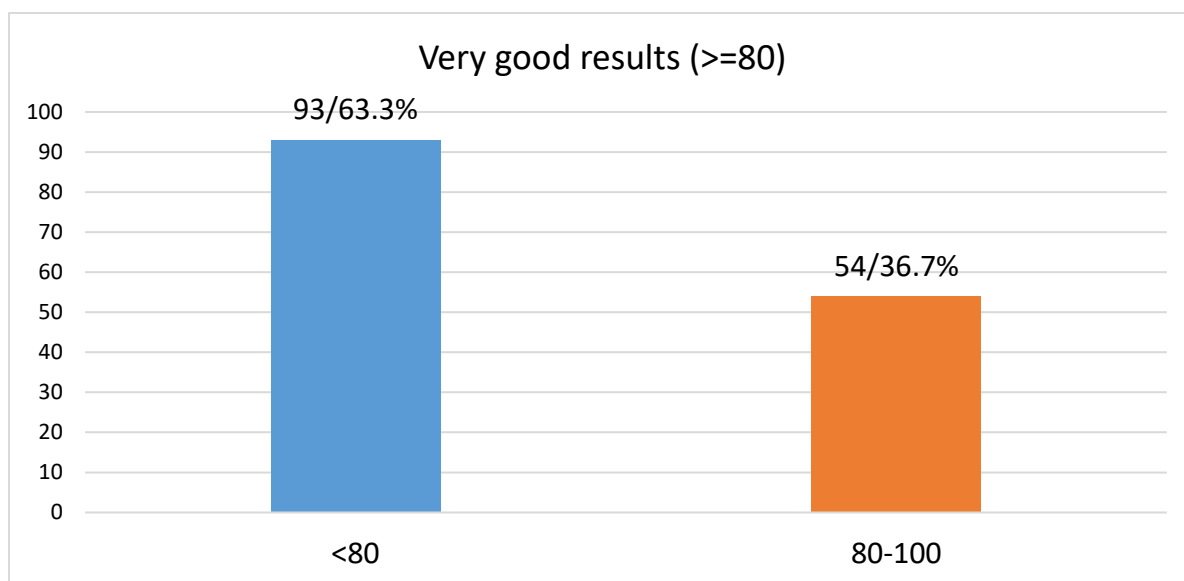
**Number of candidates: 147**

**Failed: 5**



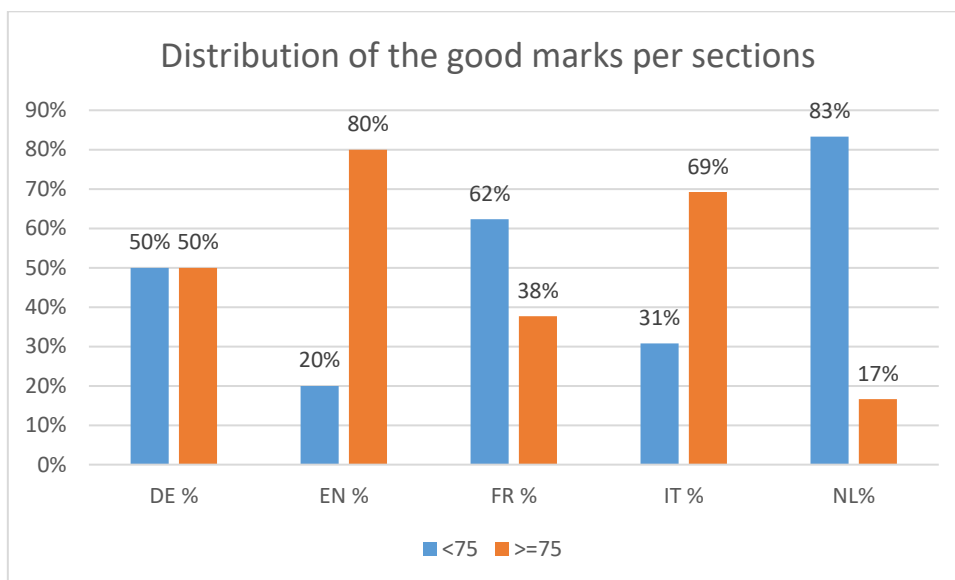






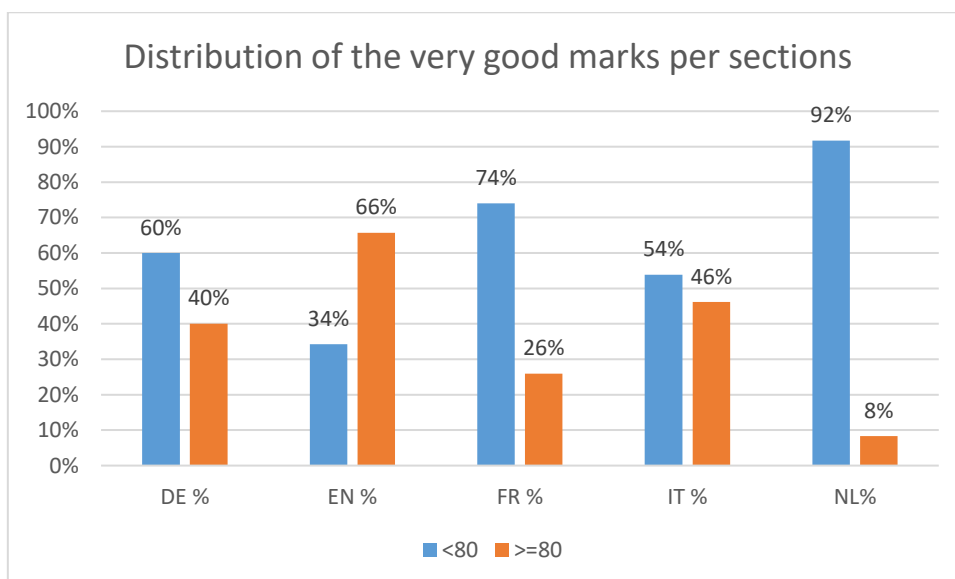
### Distribution of the good marks by sections

Marks	DE	DE %	EN	EN %	FR	FR %	IT	IT %	NL	NL%
<75	5	50%	7	20%	48	62%	4	31%	10	83%
>=75	5	50%	28	80%	29	38%	9	69%	2	17%
	10	100%	35	100%	77	100%	13	100%	12	100%

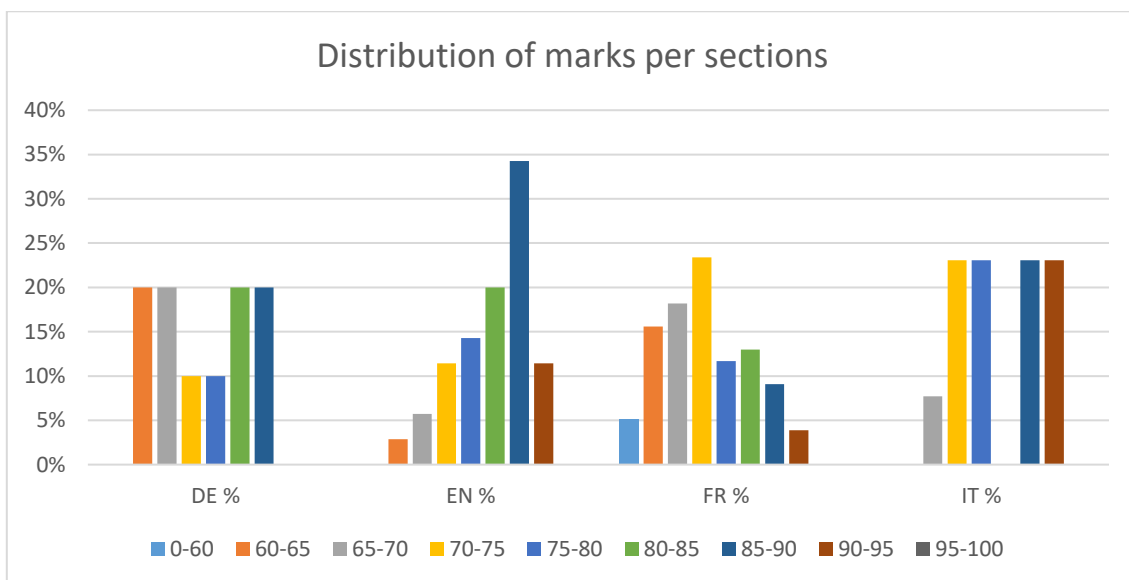


### Distribution of the very good marks by sections

Marks	DE	DE %	EN	EN %	FR	FR %	IT	IT %	NL	NL%
<80	6	60%	12	34%	57	74%	7	54%	11	92%
>=80	4	40%	23	66%	20	26%	6	46%	1	8%
	10	100%	35	100%	77	100%	13	100%	12	100%



Marks	DE	DE %	EN	EN %	FR	FR %	IT	IT %	NL	NL%
0-60	0	0%	0	0%	4	5%	0	0%	1	8%
60-65	2	20%	1	3%	12	16%	0	0%	3	25%
65-70	2	20%	2	6%	14	18%	1	8%	6	50%
70-75	1	10%	4	11%	18	23%	3	23%	0	0%
75-80	1	10%	5	14%	9	12%	3	23%	1	8%
80-85	2	20%	7	20%	10	13%	0	0%	0	0%
85-90	2	20%	12	34%	7	9%	3	23%	1	8%
90-95	0	0%	4	11%	3	4%	3	23%	0	0%
95-100	0	0%	0	0%	0	0%	0	0%	0	0%
<b>Total</b>	<b>10</b>	<b>100%</b>	<b>35</b>	<b>100%</b>	<b>77</b>	<b>100%</b>	<b>13</b>	<b>100%</b>	<b>12</b>	<b>100%</b>





### Average mark per subjects per sections

	DE	EN	FR	IT	NL	
<b>AR4</b>	68.55	77.70	76.06	75.00	83.20	<b>75.00</b>
<b>BI2</b>	75.37	83.70	67.80	77.50	69.30	<b>73.83</b>
<b>BI4</b>		84.25	73.14	80.80		<b>77.20</b>
<b>CHI</b>		87.08	80.14	84.28	66.10	<b>81.80</b>
<b>ECO</b>	67.10	82.42	75.87		88.90	<b>78.42</b>
<b>GE2</b>		91.25	69.39	82.53	71.50	<b>75.85</b>
<b>GE4</b>	82.16	81.87	71.91		70.20	<b>77.31</b>
<b>HI2</b>	86.60	86.16	77.10	82.70		<b>82.69</b>
<b>HI4</b>	77.20	82.98	77.48		73.20	<b>79.05</b>
<b>L1-</b>	76.41	84.34	75.31	81.79	71.28	<b>77.59</b>
<b>L1A</b>		82.40				<b>82.40</b>
<b>L2-</b>	76.92	84.13	74.90	81.79	71.41	<b>77.55</b>
<b>L2A</b>	71.80	83.90	90.55		69.90	<b>81.77</b>
<b>L3-</b>	76.80	83.40	73.82	76.93	71.74	<b>74.66</b>
<b>L4-</b>	79.30		69.16	79.50	68.68	<b>70.46</b>
<b>MA3</b>	75.30	81.86	72.29	74.63	69.29	<b>74.66</b>
<b>MA5</b>	80.85	86.25	78.24	84.98	74.08	<b>80.83</b>
<b>MAA</b>		89.47	79.98		67.30	<b>80.16</b>
<b>ONL</b>		86.80				<b>86.80</b>
<b>PH2</b>	76.86	85.62	75.49	83.83	71.28	<b>78.98</b>
<b>PH4</b>		80.03	71.78			<b>75.90</b>
<b>PHY</b>	79.10	89.22	79.94	86.46	70.38	<b>81.08</b>

### Final mark Females vs Males

